



SLIP RESISTANT CERAMICS – High Performance

Slips, trips & falls are the leading cause of injury in Australia. Correct flooring specification has an integral role in minimising this impact.

Klingenberg Commercial Kitchen Tiles

The **Metz Klingenberg** range are heavy duty, high performance tiles used especially in areas such as commercial kitchens where oils and contaminants are at their worst and high levels of slip resistance are a must.



- Stain resistant, low absorption body provides high levels of hygiene
- 9.5mm and 12mm thick, dry pressed tiles
- Available in 150x150 and 200x200mm formats
- Special pieces include skirtings, coves, internal and external cove pillars.
- Available in alternate profiles/slip resistance and colours

Metz Klingenberg tiles are recommended for use in:

- Commercial Kitchens
- Dairy Plants
- Confectionery/Soft Drink plants
- External Commercial Areas
- Ramps



Finishes:



Starnock R12.V4



Sicodur R13

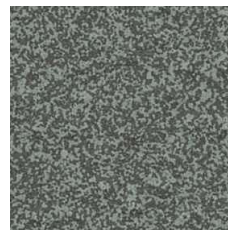
Colour Options:
(other colours available)



Grey Mix



Grey Porphyry



Graphite Mix



*Frankfurt

* Colour only available in Starnock Profile

Colour reproduction from printing is indicative only – please contact Metz for product samples and information on additional colour range. See over for more information on slip ratings.



Rev. 09/07

• ACID PROOFING • SPECIALTY TILE SYSTEMS
• INDUSTRIAL FLOORING





SLIP RESISTANT CERAMICS – Versatile Performance

Slips, trips & falls are the leading cause of injury in Australia. Correct flooring specification has an integral role in minimising this impact.

Commercial Kitchens – Does the Flooring have a V rating?

A “V” rating (volume displacement) measures the amount of profile on a flooring surface. Slip resistance is generally achieved by:-

- Surface Profile (volume displacement)
- Surface Texture
- A combination of both

The Standards Australia/CSIRO Handbook (HB:197) provides recommendations of what degree of slip resistance is required for different usage applications, including recommendations for 8 different classifications of Commercial Kitchen. Most specifiers **prefer** to simply follow these guidelines and request surfaces with a V rating profile in addition to the R12 slip resistant rating.

Specifiers should understand that the handbook requirement is that the “V” profile rating is **in addition** to the “R” slip resistance rating...e.g R12 **with** V4.

The effectiveness of surface profile versus surface texture to achieve slip resistant performance is a matter of much debate. Many users have been specifying textured, slip resistant floors for many years and are entirely satisfied with the performance of these and wish to continue the use of this type of finish. Many such specifiers are continuing to use R13 maximum category textured tiles, with the view that the additional slip resistance provides superior overall performance to the R12 with V4 profile.

Note that many other factors influence slip resistance of a floor such as, usage, cleaning regimes, footwear lighting etc.

The selection of any particular slip resistance rating is not a panacea for all situations, however either an R12 with V4 or an R13 tile, both demonstrating very high test results, should provide confidence to a specifier of a well performing floor.

The information provided in this sheet is offered as an assistance to specifiers to reinforce the importance of their becoming familiar with the slip resistance standards (AS/NZS 4586), and the Handbook HB:197 “An Introductory Guide to Slip Resistance of Pedestrian Surface Materials”. Where “tiles” are generally referred to in the above information, the same requirements apply to other floor finishes.

The ultimate decision to use the Standards Australia Handbook as an assistance guide or definitive minimum requirement rests with each specifier and their clients. Given the trend of litigation for injury claims, the inclusion of slip resistance as major selection criteria is surely essential. Note that all tiles exhibit an initial drop in slip resistance when first placed into service. This should be considered when selecting the level of slip resistance for an application.

Further information can be provided by:

Standards Australia – www.standards.org.au

CSIRO Manufacturing & Infrastructure Technology – www.cmit.csiro.au



www.metz.net.au

Please contact us for more details:

Sydney

Ph: (02) 9671 1311

Fax: (02) 9671 4292

Email: info@metz.net.au

Melbourne

Ph: (03) 9561 6144

Fax: (03) 9561 6944

Email: melbourne@metz.net.au

Brisbane

Ph: (07) 3823 5555

Fax: (07) 3823 5552

Email: qld@metz.net.au