



## SLIP RESISTANT CERAMICS – High Performance

Slips, trips & falls are the leading cause of injury in Australia. Correct flooring specification has an integral role in minimising this impact.

# Sicodur Commercial Kitchen Tiles

The **Metz Sicodur** range are high performance floor tiles from Klingenberg of Germany. They are used especially in areas such as commercial kitchens where oils and contaminants are at their worst and high levels of slip resistance are a must. The abrasive grains in Sicodur tiles are embedded throughout the entire thickness of the tile body to provide enduring slip resistant performance even in the highest traffic areas.



### Features:

- Stain resistant, low absorption body provides high levels of hygiene
- Achieves an R13 Slip Rating (maximum possible category for Oil Ramp Test)
- 8.5mm and 12mm thick, dry pressed tiles
- 150x150 and 200x200mm formats
- Contact Metz for availability on size and colour combinations.
- Special pieces include coved skirtings suitable for use in food premises, internal and external cove pillars and standard skirtings.

Metz Sicodur tiles are recommended for use in:

- Commercial Kitchens
- Dairies and Breweries
- Confectionery, Soft Drink plants
- External Commercial Areas
- External Ramps

### Finish:



Sicodur R13

### Colour Options:

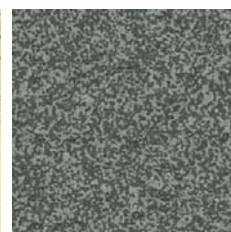
(other colours available on request)



Grey Mix



Grey Porphyry



Graphite Mix

Colour reproduction from printing is indicative only – please contact Metz for product samples and information on additional colour range. See over for more information on slip ratings.



Rev. 11/09

• ACID PROOFING • SPECIALTY TILE SYSTEMS  
• INDUSTRIAL FLOORING

[www.metz.net.au](http://www.metz.net.au)





## **SLIP RESISTANT CERAMICS – Versatile Performance**

Slips, trips & falls are the leading cause of injury in Australia. Correct flooring specification has an integral role in minimising this impact.

### **Commercial Kitchens – Surface Profile Vs Textured Surface?**

The effectiveness of surface profile versus surface texture to achieve slip resistant performance is a matter of much debate.

For many years, textured slip resistant floor tiles have provided their users with entirely satisfactory floor finishes. Many such users wish to continue with the proven performance of this type of finish, however are confused by the requirements of slip resistance Handbook HB:197, noting its recommendation for profiled surfaces (R12 with V4 rating).

Metz Sicodur is an R13 slip resistant textured tile, enabling users and specifiers the confidence that they have selected a tile from the maximum R13 category rating. Given this additional slip resistance (over R12) it is arguable that this provides superior overall performance compared to the R12 with V4 profile as recommended by the handbook.

Note that many other factors influence slip resistance of a floor such as, usage, cleaning regimes, footwear lighting etc.

The selection of any particular slip resistance rating is not a panacea for all situations, however either an R12 with V4 or an R13 tile, both demonstrating very high test results, should provide confidence to a specifier of a well performing floor.

The information provided in this sheet is offered as an assistance to specifiers to reinforce the importance of their becoming familiar with the slip resistance standards (AS/NZS 4586), and the Handbook HB:197 "An Introductory Guide to Slip Resistance of Pedestrian Surface Materials". Where "tiles" are generally referred to in the above information, the same requirements apply to other floor finishes.

The ultimate decision to use the Standards Australia Handbook as an assistance guide or definitive minimum requirement rests with each specifier and their clients. Given the trend of litigation for injury claims, the inclusion of slip resistance as major selection criteria is surely essential. Note that all tiles exhibit an initial drop in slip resistance when first placed into service. This should be considered when selecting the level of slip resistance for an application.

Further information can be provided by:  
Standards Australia – [www.standards.org.au](http://www.standards.org.au)  
CSIRO Manufacturing & Infrastructure Technology – [www.cmit.csiro.au](http://www.cmit.csiro.au)



[www.metz.net.au](http://www.metz.net.au)

Please contact us for more details:

**Sydney**  
Ph: (02) 9671 1311  
Fax: (02) 9671 4292  
Email: [info@metz.net.au](mailto:info@metz.net.au)

**Melbourne**  
Ph: (03) 9561 6144  
Fax: (03) 9561 6944  
Email: [melbourne@metz.net.au](mailto:melbourne@metz.net.au)

**Brisbane**  
Ph: (07) 3823 5555  
Fax: (07) 3823 5552  
Email: [gld@metz.net.au](mailto:gld@metz.net.au)